

Key Features

- High power
- Low insertion loss
- High isolation

Primary Applications

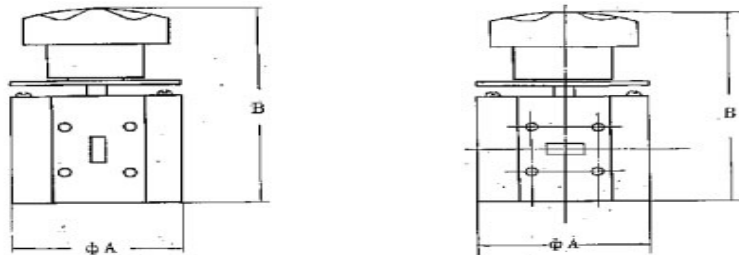
- Bench test setups
- Microwave power transmission system

General Description

Standard WSE and WSH series are offered for frequency range from 8 to 110 GHz with full waveguide band operation. The E and H plane waveguide switches are to realize signal paths change by manually turning the knob.



Outline Drawing



Typical specification

Part No.	Frequency Range, GHz	Waveguide sizes	Flange Type	VSWR	Isolation, dB	Dimensions, inch (mm)	
						A	H
WSH090-01	8.2~12.4	WR-90	UG39/U	1.1:1	50.0	70.0	90.0
WSE090-01	8.2~12.4	WR-90	UG39/U	1.1:1	50.0	60.0	90.0
WSH075-01	10.0~15.0	WR-75	UBR120	1.1:1	50.0	60.0	80.0
WSE075-01	10.0~15.0	WR-75	UBR120	1.1:1	50.0	60.0	80.0
WSH062-01	12.0~18.0	WR-62	UG419/U	1.1:1	50.0	50.0	70.0
WSE062-01	12.0~18.0	WR-62	UG419/U	1.1:1	50.0	50.0	70.0
WSH051-01	15.0~22.0	WR-51	UG595/U	1.1:1	50.0		
WSE051-01	15.0~22.0	WR-51	UG595/U	1.1:1	50.0	50.0	70.0
WSH042-01	18.0~26.5	WR-42	UG595/U	1.1:1	50.0	50.0	70.0
WSE042-01	18.0~26.5	WR-42	UG595/U	1.1:1	50.0	50.0	70.0
WSH034-01	22.0~33.0	WR-34	UG1530/U	1.1:1	50.0	45.0	60.0
WSE034-01	22.0~33.0	WR-34	UG1530/U	1.1:1	50.0	45.0	60.0
WSH028-01	26.5~40.0	WR-28	UG599/U	1.1:1	50.0	45.0	60.0
WSE-028-01	26.5~40.0	WR-28	UG599/U	1.1:1	50.0	45.0	60.0



STANDARD WAVEGUIDE SWITCHES WSE and WSH Series

WSH022-01	33.0~50.0	WR-22	UG383/U	1.1:1	50.0	45.0	60.0
WSE022-01	33.0~50.0	WR-22	UG383/U	1.1:1	50.0	45.0	60.0
WSH019-01	40.0~60.0	WR-19	UG385/U	1.1:1	50.0	45.0	60.0
WSE019-01	40.0~60.0	WR-19	UG385/U	1.1:1	50.0	45.0	60.0
WSH015-01	50.0~75.0	WR-15	UG385/U	1.1:1	50.0	45.0	60.0
WSE015-01	50.0~75.0	WR-15	UG385/U	1.1:1	50.0	45.0	60.0
WSH012-01	60.0~90.0	WR-12	UG387/U	1.1:1	50.0	45.0	60.0
WSE012-01	60.0~90.0	WR-12	UG387/U	1.1:1	50.0	45.0	60.0
WSH010-01	75.0~110.0	WR-10	UG387/U	1.1:1	50.0	45.0	60.0
WSE010-01	75.0~110.0	WR-10	UG387/U	1.1:1	50.0	45.0	60.0