

**Key Features**

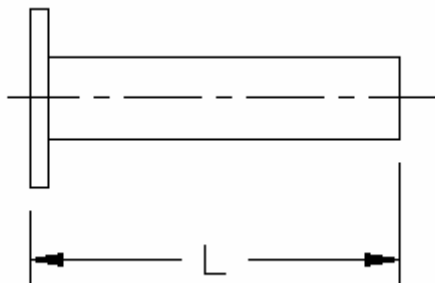
- Low VSWR
- Low cost

**Primary Applications**

- Matching port termination
- Microwave sub-systems
- Precise testing system

**General Description**

Standard WPT series are offered for frequency range from 2.6 to 110 GHz with 1.03:1 VSWR.

**Outline Drawing****Typical specification**

Part No.	Frequency Range, GHz	Waveguide sizes	Flange Type	VSWR	Length, mm (inch)	Operating Temperature °C
WPT2840	2.60~3.95	WR-284	CPR284F	1.03:1		-40~+85
WPT2290	3.30~4.90	WR-229	CPR229F	1.03:1		-40~+85
WPT1870	3.95~5.85	WR-187	CPR187F	1.03:1		-40~+85
WPT1590	4.90~7.05	WR-159	CPR159F	1.03:1		-40~+85
WPT1370	5.85~8.20	WR-137	CPR137F	1.03:1	185.0	-40~+85
WPT1120	7.0~10.0	WR-112	CPR112F	1.03:1	170.0	-40~+85
WPT0900	8.2~12.4	WR-90	UG39/U	1.03:1	150.0	-40~+85
WPT0750	10.0~15.0	WR-75	UBR120	1.03:1	125.0	-40~+85
WPT0620	12.0~18.0	WR-62	UG-419/U	1.03:1	100.0	-40~+85
WPT0510	15.0~22.0	WR-51	UG-595/U	1.03:1		-40~+85
WPT0420	18.0~26.5	WR-42	UG-595/U	1.03:1	70.0	-40~+85
WPT0340	22.0~33.0	WR-34	UG1530/U	1.03:1		-40~+85
WPT0280	26.5~40.0	WR-28	UG-599/U	1.03:1	60.0	-40~+85
WPT0220	33.0~50.0	WR-22	UG-383/U	1.03:1	60.0	-40~+85
WPT0150	50.0~75.0	WR-15	UG-385/U	1.03:1	50.0	-40~+85
WPT0100	75.0~110.0	WR-10	UG-387/U	1.03:1	40.0	-40~+85