

**Features:**

- Frequency band: 15~50 GHz
- Small signal gain: 28 dB
- Output Power 1dB Compression: 16 dBm
- 2.4mm(F) connector RF I/O
- Single power supply, with integrated internal voltage regulator, and DC power up/down sequency



**Electrical Specifications**

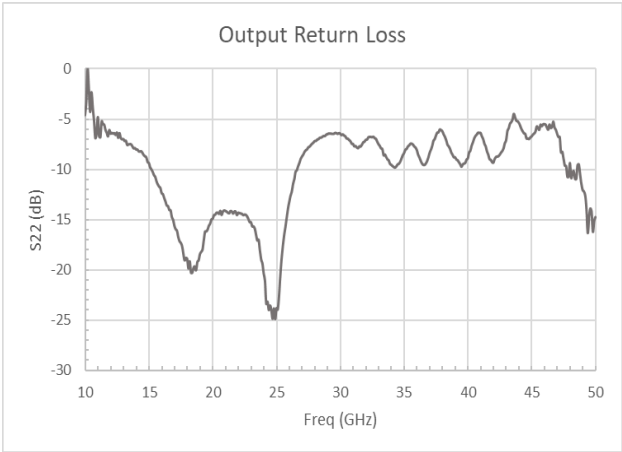
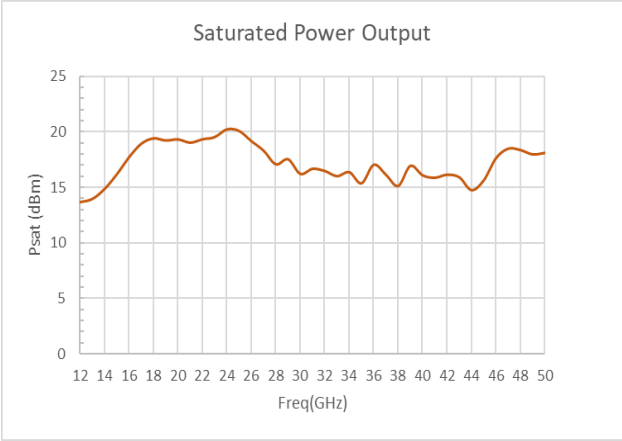
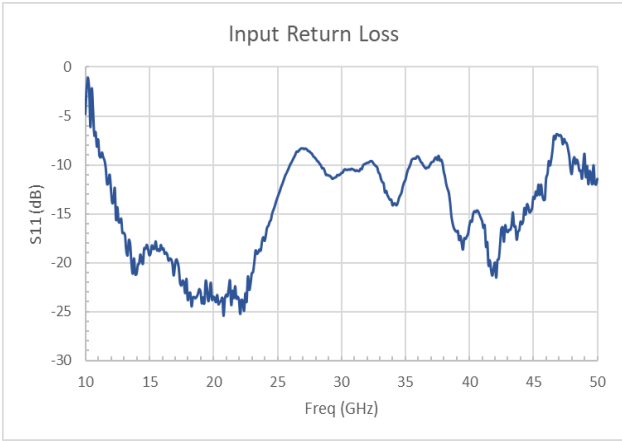
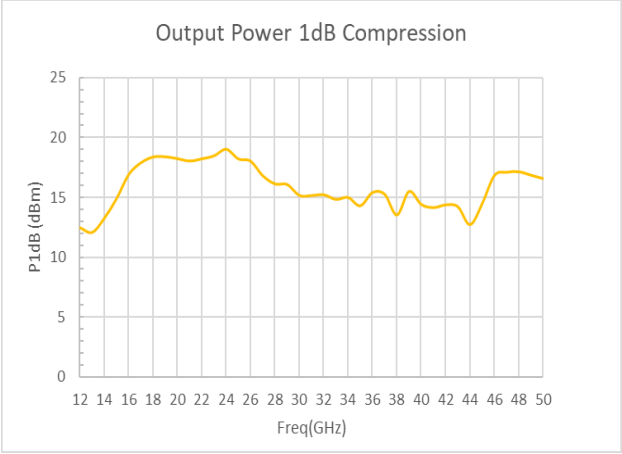
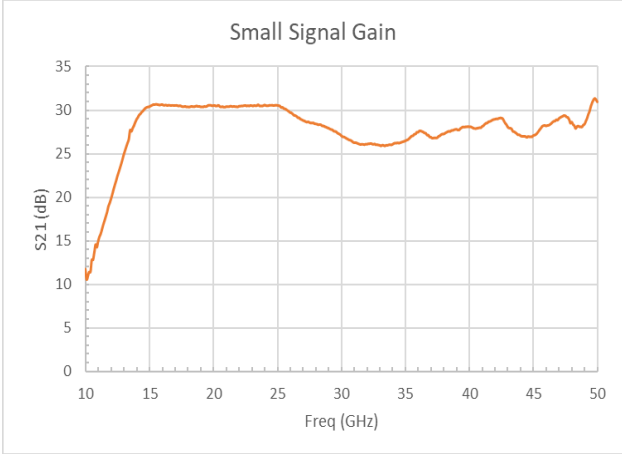
Parameters	Specifications		
	Minimum	Typical	Maximum
Frequency Range	15 GHz		50 GHz
Nominal SS Gain @25°C		28 dB	
Output 1dB Compression (P1dB)		16 dBm	
Saturated Output Power (Psat)		17 dBm	
Input Return Loss		10 dB	
Output Return Loss		8 dB	
DC Voltage	+8 V		+12 V
DC Supply Current		243 mA	
In/Out connectors	2.4mm(F) Coaxial		
Outline Dimensions (not including SMA and feed pin)	1.20"x1.00"x0.40"		

**Absolute Maximum Ratings**

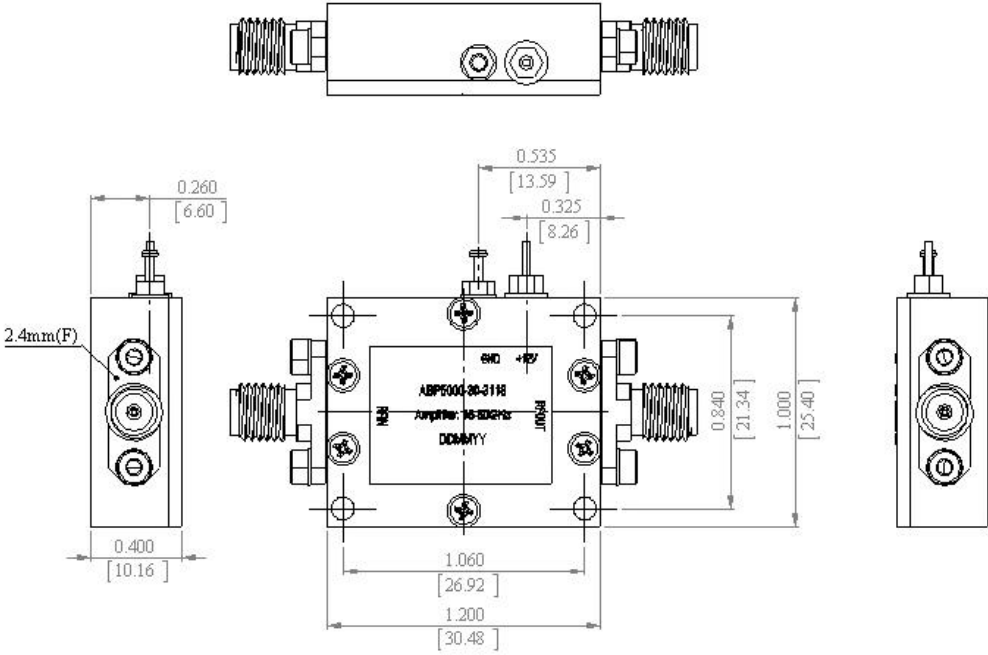
DC Voltage	+15 V
RF Input Power	+20 dBm
Storage Temperature	-55~+125°C
Operating Temperature	-45~+65°C

Note: External heat sink required for operation

Typical Performance Characteristics



Mechanical Structure:



Note: All units in inches [mm].

Housing Material and Surface Finish:

Body and cover material: aluminum  
Surface finish: nickel plated

Revision History:

Revision	Date	Description	Comments
A00	01/24/24	Initial Release	



Electrostatic sensitive device, please observe precautions for handling this amplifier.